



J Transom Close, London, SE16 7FH

Located in one of the most picturesque and tranquil Rotherhithe / Canada Water locations is this generous studio apartment overlooking the South Dock Marina.

Featuring wooden flooring throughout and bespoke built-in cupboards, the property boasts a naturally living room / sleeping area, the kitchen with integrated dining table and plenty of storage space and a well-kept bathroom.

Marine Wharf and Greenland Place developments with a plethora of independent cafe / restaurants, gyms and beauty salons, as well as Tesco and Coop, are just round the corner, and Canada Water and Surrey Quays Stations for the Jubilee Line and Overground are within easy reach. The Thames Clipper for a 5-minute commute to Canary Wharf is moments away.

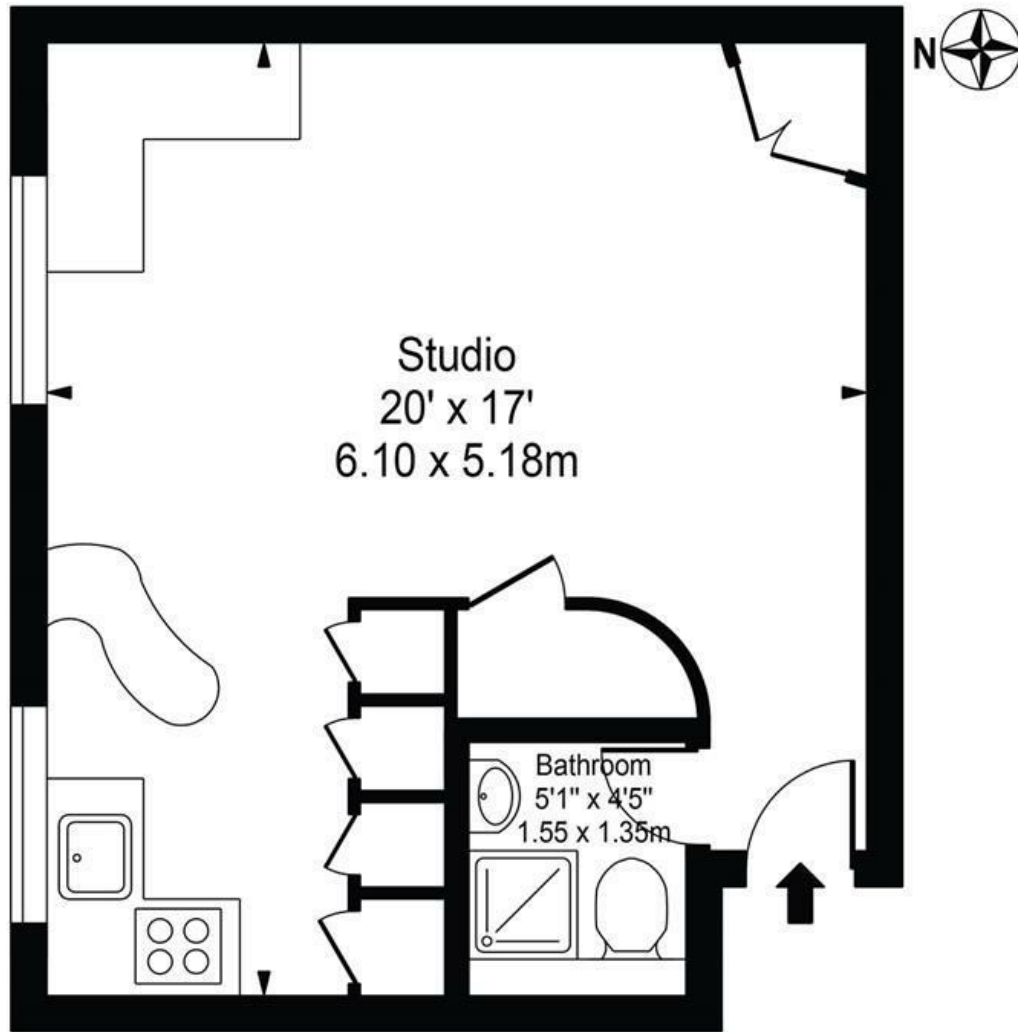
- Generous Studio
- Water Views
- Pictoresque Setting
- Bespoke Cupboards
- Wooden Flooring Throughout
- Close to Transport Links
- Moments from Thames Clipper for Canary Wharf
- Plethora of Local Amenities
- Residents Parking

Alex & Matteo
ESTATE AGENTS

£1,150 Per month

Transom Close

Approx. Gross Internal Area 331 Sq Ft - 30.75 Sq M



Second Floor

For Illustration Purposes Only - Not To Scale

This floor plan should be used as a general outline for guidance only and does not constitute in whole or in part an offer or contract. Any intending purchaser or lessee should satisfy themselves by inspection, searches, enquiries and full survey as to the correctness of each statement. Any areas, measurements or distances quoted are approximate and should not be used to value a property or be the basis of any sale or let.

Energy Efficiency Rating		
	Current	Potential
Very energy efficient - lower running costs		
(92 plus) A		
(81-91) B	80	85
(69-80) C		
(55-68) D		
(39-54) E		
(21-38) F		
(1-20) G		
Not energy efficient - higher running costs		
England & Wales		
EU Directive 2002/91/EC		